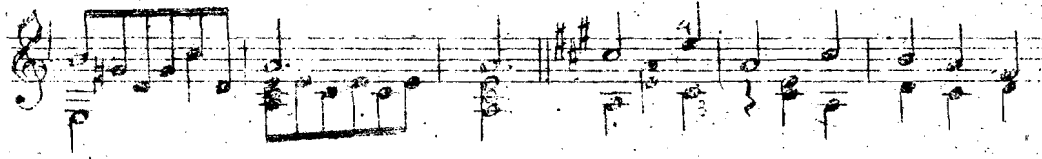
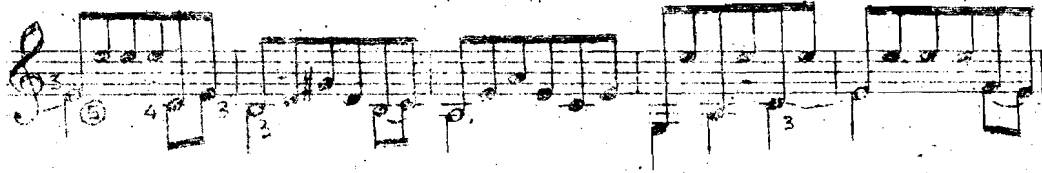
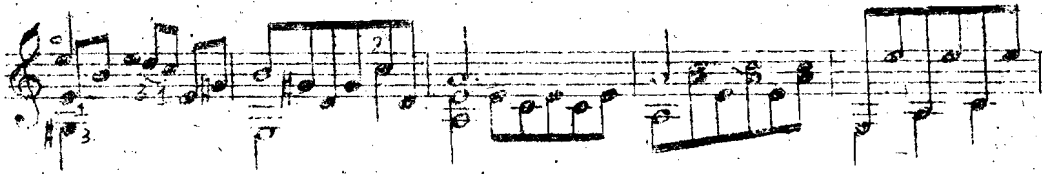
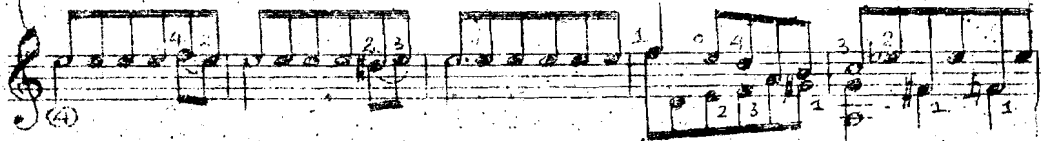
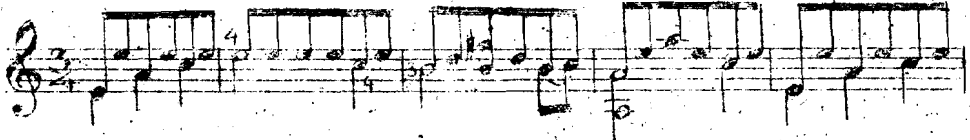


ĐÊM THU

Arrangé par Hồ Đăng Tín

Đặng Thế Khong



A handwritten musical score consisting of eight staves, all in G major (one sharp). The notation is written in a cursive, handwritten style. The first seven staves are in treble clef, and the eighth staff is in bass clef. The music features a variety of rhythmic values, including eighth and sixteenth notes, and rests. Several measures are grouped with slurs, and some include fingerings (e.g., 1, 2, 3, 4, 5) and accents. The eighth staff begins with a 4/4 time signature and contains some chordal textures. The overall appearance is that of a personal manuscript or a student's work.